



# magazine

official PLAYbook of the LEGO® Club

July - August 2004

**CALLING ALL AGENTS...**

Alpha Team Needs you!

**ULTIMATE VAMPIRE!**

Surrender or Run!

**MESOZOIC MONSTER!**

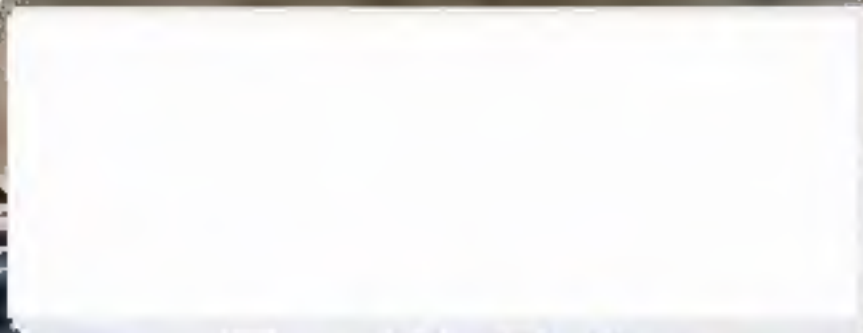
Complete Building Steps!

**Knights  
Kingdom**



Printed in the  
USA  
PAID  
00000000

LEGO® is a registered trademark of the LEGO Group, Denmark. © 2004 LEGO Group



www.LEGOclub.com



# Ultimate Vahki!

## BIONICLE

When there's a danger too great for any Vahki squad to meet, Metru Nui relies on two ultimate Vahki machines for protection. But should these mechanical enforcers turn and betray the city, what power could stand against them?


### Kranua

An extremely specialized Vahki model, the Kranua is called into action less often than the Kraahu. Powerful and bulky, the Kranua is capable of transforming its body into animated grains of protodermis. It can then flow through narrow cracks or vanish into the pavement, before reforming somewhere else. This makes the Kranua highly effective at pursuing law-breakers into tiny spaces or confusing rampaging Rahi with its sudden disappearances and reappearances.

### Kraahu

Unlike the Vahki, who have a central mechanism governing their intelligence, the Kraahu's knowledge centers are scattered throughout its body. The advantage of this is that the Kraahu can actually split apart and send its individual pieces to act independently. This allows it to challenge multiple foes by sending six legs off in six different directions, while its other components monitor the area and defend against attacks. As a single unit, the Kraahu is capable of sending out clouds of stun gas. Kraahu parts give off a powerful electrical charge when touched.


Build Kraahu with 1784 elements and instructions (plus three other Vahki sets)



Bardakh 8615    Zadakh 8617    Keerakh 8619



Build Kranua with the elements and instructions (plus three other Vahki sets)



Nuurakh 8614    Vorzakh 8616    Rorzakh 8618



Access more information on the Vahki squads and the city of Metru Nui at [www.LEGOclub.com](http://www.LEGOclub.com)

clubcode  
**BIONICLE**





ARE THESE MARTIAN TRANSMISSIONS FROM ASTROBOTS BIFF AND SANDY? TOP SECRET ALPHA TEAM MISSION REPORTS? OR MUSHY LOVE LETTERS FROM ALL MY SECRET ADMIRERS? NO, THEY'RE IMPORTANT LETTERS FROM LEGO CLUB MEMBERS, AND ONE OF THEM COULD BE YOURS! JUST MAIL ME YOUR QUESTION, ALONG WITH YOUR NAME AND AGE, TO:

LEGO Mailbag  
PO Box 1308  
Enfield, CT 06083-1308

# mailbag



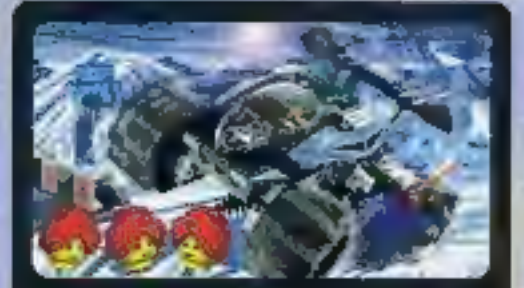
I saw BIONICLE: The Mask of Light™ and it was awesome! I'm a big fan and I was wondering if they are making another movie.  
Jerrod, 11

They sure are, Jerrod. Look for BIONICLE 2: Legends of Metru Nui on DVD and video this October, starring the Toa Metru, the Vehki, and other characters from the BIONICLE universe!



What does the name LEGO mean? Does it stand for something?  
Lawrence, 9

It certainly does! LEGO comes from the Danish term "Leg Godt," which means "play well." Ole Kirk Christiansen, founder of the LEGO Company, came up with this perfect name way back in 1934, and since that time, LEGO toys have stood for just what the name says — playing well!



Do you have any brothers or sisters? What's your favorite LEGO set?  
Caitlin, age 9

Yes, I have three brothers — Fredini, Eddini, and Jedini. And I think the new Alpha Team sets coming out this year are so cool, they're icy!



# contents

Help the Knights Find the Magical Shield of Ages! Hidden in this issue of LEGO Magazine are four pieces of the Shield. Find them all and unscramble the letters for a secret KNIGHTS' KINGDOM message.



2 **Mis of Morcia**  
Portrait of a noble quest.



5 **Knights Kingdom Challenge**  
The game of champions!



8 **Desert Deep Freeze!**  
Alpha Team protect planet from Ogel?



11 **World City Needs a Hero!**  
Could you be the one?



12 **Prehistoric Predator**  
Dig your teeth into a new challenge!



14 **Cool Creations**  
Amazing models from LEGO Club members.

BY THE CODE, WHERE ARE WE?

THIS IS NOT THE CITADEL OF ORLAN. 'TIS SOME SORT OF...MAGAZINE CONTENTS PAGE!



HEY, WHAT'S WITH THE FLOATING HEAD GUY?

PERHAPS THE SHIELD OF AGES HAS BEEN HIDDEN HERE. LET'S SEE WHAT WE CAN FIND, KNIGHTS!

THEY'LL NEVER FIND THE SHIELD, THANKS TO MY CUNNING PLAN!







# Knights Kingdom

## THE KINGDOM OF MORCIA

A land of endless magic and adventure. The good king has been replaced by the evil Viadek, and it is up to four heroic Knights to find the Heart of the Magical Shield and save their kingdom.

ORKOSAN PROVINCE  
Home of Santis

Use Santis' strength  
to hurl a boulder!

### BORDER AMBUSH 8778

A wicked Shadow Knight guards the rickety bridge to the Moorlands. Santis must defeat him to get the key!

### THE DESOLATE MOORLANDS

Here be Monsters!

Use the catapult  
to repel Viadek's  
attack!

Raise the bridge  
and scale the tower  
if you dare, but watch  
out for traps, spinning axes  
and the giant serpent's bite!

### CITADEL OF ORLAN 8780

Challenges and mysteries await at the legendary Citadel of Orlan. Will the Knights' incredible skills be enough to gain the Heart of the Magical Shield?

BANTERAS PROVINCE  
Home of Rascus



ALENDAN PROVINCE  
Home of Danju

**CASTLE OF MORCIA - 8781**  
Vladek has transformed this noble castle into a dark fortress. Only the Knights can change it back!

The Knights begin their quest.

**VLADEK ENCOUNTER - 8777**

Danger lurks on the road to Morcia. Vladek wants the Heart, but Danju won't give it up easily!

TALONJAY PROVINCE  
Home of Jayko

**GRAND TOURNAMENT - 8779**

The Grand Tournament will decide the Fate of Morcia. Can Jayko finally defeat Vladek, or will evil triumph over all?

Launch the steeds for jousting action!

MORCIA



# Who Will Be the Next Tournament Champion?

A tournament challenge is a true test of knightly skill. Knock your opponent's shield off before he can remove yours and you'll earn the respect and adoration of the crowd!



THESE FELLOWS SEEM STRANGELY FAMILIAR...

THEY'RE BIG, BUT I'LL BET I COULD TAKE 'EM.



Use the 3 special Knight's Kingdom game cards included with this month's LEGO magazine to play Knight's Kingdom Challenge! You'll find 3 more game cards inside every Knight's Kingdom set!

Attach game cards to your Knights for a whole new way to play! Knock off your opponent's shield to win the Challenge!

More Knight's Kingdom adventures await at [www.LEGOclub.com](http://www.LEGOclub.com) CLUB CODE: KNIGHTS





## Knights Kingdom Challenge Card Game

### CHOOSE YOUR CHAMPION!

You can play KNIGHTS KINGDOM CHALLENGE with any cards in your deck, but for an extra challenge, choose one Knight and pit his cards against your opponent's favorite. Who will you pick to be YOUR Champion?



### Make Your Own Shield!

Here's your chance to make your own shield! Using this page or a photocopy, create a design for your shield. Have an adult cut out the shield (don't forget the hole in the middle!) and glue it to a piece of heavy paper or thin cardboard. You can attach your shield to a KNIGHTS KINGDOM figure to use in adventures and tournament challenges!



### Rules

- Both players start with the same number of cards. Before playing, arrange your deck in any order you wish. Once the game starts, you can not change the order of your cards.
- Hold your cards with the **SHIELD** side facing your opponent. It's time for a **JOUST**! Call out the Joust symbol (**SWORD**, **HELMET**, **SHIELD** or **HEART OF THE MAGICAL SHIELD**) that appears at the top of the picture on the card. The player with the strongest symbol becomes the **CHALLENGER**, the other player is the **DEFENDER**. If both players have the same symbol, move those cards to the back of your decks and Joust again.

#### Joust Symbol Power Rankings:

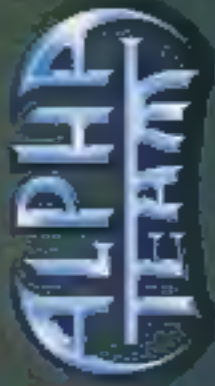


- The **CHALLENGER** places their card down with the **SHIELD** side facing **UP** and says which **SKILL** they are using to Challenge: **SPEED** (Blue Hawk), **STRENGTH** (Red Bear), **AGILITY** (Green Monkey) or **WISDOM** (Purple Wolf).
- The **DEFENDER** places their card on top of the Challenger's card with the **SHIELD** side facing **DOWN** so that the **POWER NUMBERS** line up on the right side. The player with the highest **POWER NUMBER** in the Challenger's **SKILL** wins that challenge! If the numbers are the same, then both players return their cards to the back of their decks.
- If you win a Challenge, return your winning card to the back of your deck. Should you lose a challenge, you must put your card to the side. It cannot be used again in the current game.
- The game can last a set number of rounds or until one player has no more cards left. The player with the most cards left at the end of the game is the winner of the **KNIGHTS KINGDOM CHALLENGE**!





# GEAR UP FOR A CHANGE! ALPHA TEAM'S NEW DOUBLE DUTY SPY SHUTTLES!



## Alpha Team Agents Assemble!

Listen up! Ogel and his crew are planting ice orbs all over, stealing the heat right out of the air and turning the planet into an ice cube. Think you're ready to take him on? Then here's the latest Alpha Team tech to help you get the job done!

DASH JUSTICE

ALPHA TEAM COMMANDER



### Chill Speeder

ALPHA TEAM VEHICLE CODE: 4742

MAX. SPEED: 150 mph/241 kmh

GEAR: ice orb deflector, stealth engine, radar, afterburner

ALPHA MODE: Hit the controls and it turns into an X-1 Snowbot Defender.

VEHICLE CLASS: Alpha Team junior agents start out on the Chill Speeder. The stealth engine keeps Ogel's icy creeps from hearing it until you're close enough to heat things up.



>>> ALPHA MODE

### Ice Blade

ALPHA TEAM VEHICLE CODE: 4745

MAX. SPEED: 400 mph/644 kmh

GEAR: ice orb deflector, electromagnetic runners, magma engine, radiant heat field

ALPHA MODE: Alters in seconds to sleek and powerful IC-2 helicopter.

VEHICLE CLASS: Prove you have what it takes to be an Alpha-4 agent and you could be piloting an Ice Blade. Just keep your mitts off the engine — it runs on molten lava and can turn on scalding to ashes.



>>> ALPHA MODE

### Tundra Tracker

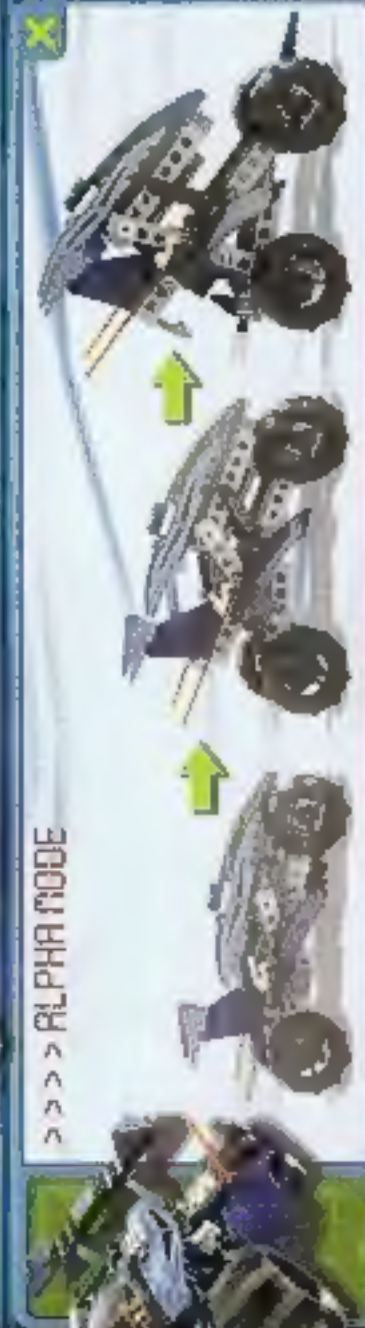
ALPHA TEAM VEHICLE CODE: 4744

MAX. SPEED: 400 mph/644 kmh

GEAR: Magma powered drift, all-terrain permafrost tires, ice orb deflector, radar, twin solar lasers, MW-1 magma engine

ALPHA MODE: Agent gearbox designed this to change into an unstoppable drilling machine strong enough to split a mountain!

VEHICLE CLASS: Alpha-3 agents drive the Tundra Tracker, the toughest wheeled vehicle ever designed by the AT lab. Cuts through rock like a heat beam through a snowbank.



>>> ALPHA MODE



## Blue Eagle

ALPHA TEAM VEHICLE CODE: 4716

TRAX SPEED: Mach 3/4

GENE: Eagle claw, ice orb detector, stealth technology throughout, twin solar lasers, twin MW-3 magma engine, radar, thermal uplink generator.

ALPHA MODE: Turns into a lightning fast ice glider for high speed pursuits on land.

VEHICLE CLASS: Make it to Alpha-2 and you're qualified to climb into the cockpit of the Blue Eagle, with its powerful Eagle claws you can snatch Omega agents right off the ice. If enemy snowblasts force you down, transform into an ice glider and take them by surprise!

Control THE SNOW CRUTCH

ALPHA TEAM ENEMY ID CODE: 4715

We don't know much about them, other than that they have been spotted all over the world planting ice orbs. Bring one in intact and you'll be an Alpha Team hero.



## Mobile Command Center

ALPHA TEAM VEHICLE CODE: 4714

TRAX SPEED: 250 mph/402 kmh

GENE: MW-2 magma engine, solar cannon, ice orb detector, ice orb clone, twin Alpha-1 snow blade, stealth engine, radar.

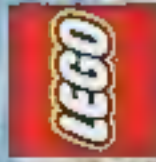
ALPHA MODE: Changes from a powerful truck into a fully-equipped command center.

VEHICLE CLASS: Only the best of the best get to operate the

Mobile Command Center - the Alpha 1 agent! They have to be good, because Ogel would give his last snowball to get his hands on this monster.







ALPHA  
TEAM

A HEAVILY ARMORED VEHICLE GLIDES, SWIFT AND SILENT,  
ACROSS A VAST LAND OF SNOW, ICE AND FREEZING COLD ...



HARD TO BELIEVE  
THIS WAS A DESERT  
AN HOUR AGO!

DASH, DO YOU HEAR ME?  
OGEL AND HIS ICE DRONES ARE  
TRYING TO FREEZE THE  
WORLD — AND WE DON'T HAVE  
ENOUGH ALPHA TEAM AGENTS  
TO STOP HIM!

ROGER!  
WE NEED TO  
RECRUIT MORE AGENTS,  
AND FAST!

INSIDE THE VEHICLE — ALPHA TEAM  
MOBILE COMMAND CENTER!



WHOA, RADIA! YOU'RE  
NOT GOING TO BELIEVE  
— WAIT!

ONE OGEL SNOW CRAWLER  
WITH ICE ORB SPOTTED BELOW!  
I'M IN PURSUIT!



DASH PILOTS THE BLUE EAGLE, SEARCHING FOR SIGNS OF  
OGEL AND HIS DRONES... SUDDENLY THE CANYON FREEZES!



BEFORE DASH'S EYES, THE OGEL ORB TURNS  
THE LAND ALL AROUND INTO AN ICEBOX!



ALPHA MODE INITIATED



THINK YOU CAN ESCAPE THE BLUE EAGLE, DO YOU? INITIATE ALPHA MODE!!!

HEARWHIMPER ON THE FAR SIDE OF THE WORLD, ARIEL! ARROW! FLOOTS THE ICE BLADE IN SEARCH OF OGEL'S SECRET BAGEL...

ARROW TO RAPHA, WE COULD HAVE ONE HECK OF A SNOWBALL FIGHT DOWN HERE - BUT OGEL WOULD PROBABLY TRY TO CHEAT.

RUMBLE!!!

HIGH ABOVE, THREE OGEL SNOW CRAWLERS ARE UP TO THEIR USUAL HO-BOOP...

YOU WON'T GET AWAY FROM MY ICE GLIDER!

ICE GEL FORMATION COMPLETE

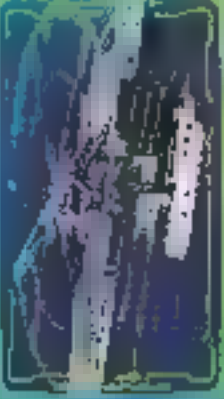
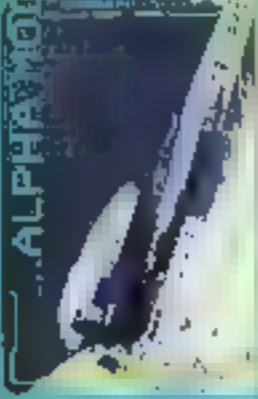
HAI! IF THOSE BRONES THINK THEY CAN STOP ME WITH A LITTLE SNOW, THEIR BRAINS ARE FROZEN. INITIATE ALPHA MODE!!!





# SMOOSH!

ALPHA TEAM INITIATED.

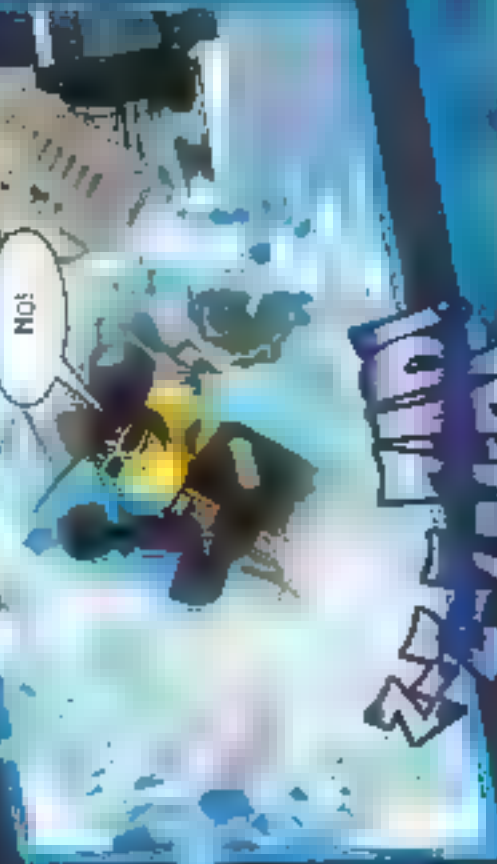


... LIP AND OVER | GO!

TRANSFORMATION COMPLETE ZOOM 2 X



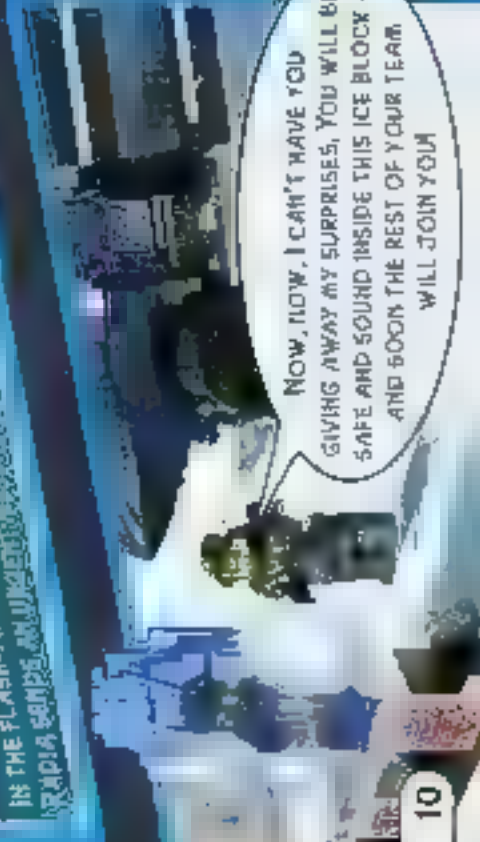
RADIO TO ALPHA TEAM!  
IT LOOKS LIKE OGEL'S UP TO  
SOMETHING A LOT BIGGER THAN JUST  
SPREADING ICE AND SNOW!  
HE'S PLANNING TO -



NO!

# SMOOSH!

I HAVE A PLAN SO COOL  
IT'S FROZEN SOLID - AND NOT  
EVEN ALPHA TEAM CAN  
STOP ME NOW!



NOW, NOW, I CAN'T HAVE YOU  
GIVING AWAY MY SURPRISES, YOU WILL BE  
SAFE AND SOUND INSIDE THIS ICE BLOCK -  
AND SOON THE REST OF YOUR TEAM  
WILL JOIN YOU



# HELP RESCUE BRUNNENBERG

# BE BORN TO BE FROSTY FINE

Log on to  
[www.LEGO.com/ALPHATEAM](http://www.LEGO.com/ALPHATEAM)  
to become an Alpha team agent!



Can you

# SAVE

## World City?

You could win one of 50  
Rescue Chopper or  
Fire Command  
Craft sets!



World City is facing its greatest crisis ever! The Rescue Chopper and Fire Command Craft are on their way to the rescue! But they need your help to save the day!

Choose either the Rescue Chopper or the Fire Command Craft and write a story (no more than 150 words) about World City's emergency and how this rescue vehicle saves the city. Be as crazy and creative as you want!

### How to Enter

1. Visit [www.worldcity.com](http://www.worldcity.com) to see the sets and to register.
2. Write a story of no more than 150 words, detailing the vehicle you choose and how they save the city.

### Official Rules

1. The competition is open to all children aged 7-11 years old living in the United Kingdom. Entries from children under 7 years old will not be accepted.

2. The competition is open to all children aged 7-11 years old living in the United Kingdom. Entries from children under 7 years old will not be accepted.

3. The competition is open to all children aged 7-11 years old living in the United Kingdom. Entries from children under 7 years old will not be accepted.

4. The competition is open to all children aged 7-11 years old living in the United Kingdom. Entries from children under 7 years old will not be accepted.

5. The competition is open to all children aged 7-11 years old living in the United Kingdom. Entries from children under 7 years old will not be accepted.

### Official Rules

1. The competition is open to all children aged 7-11 years old living in the United Kingdom. Entries from children under 7 years old will not be accepted.

2. The competition is open to all children aged 7-11 years old living in the United Kingdom. Entries from children under 7 years old will not be accepted.

3. The competition is open to all children aged 7-11 years old living in the United Kingdom. Entries from children under 7 years old will not be accepted.

4. The competition is open to all children aged 7-11 years old living in the United Kingdom. Entries from children under 7 years old will not be accepted.

5. The competition is open to all children aged 7-11 years old living in the United Kingdom. Entries from children under 7 years old will not be accepted.

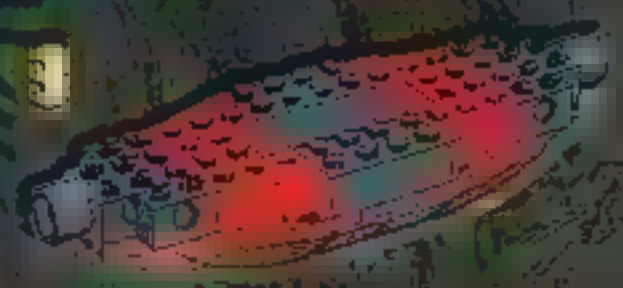
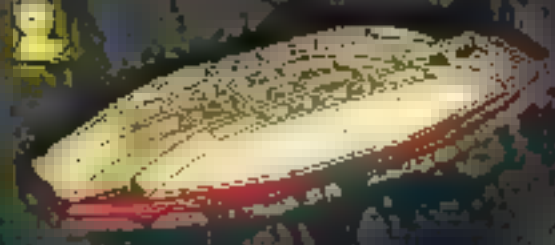




you can build this

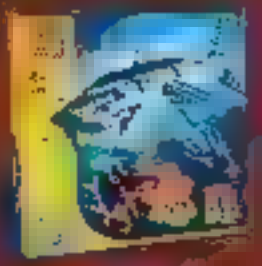
# BEWARE THE JAW OF THE IRONOSAURUS!

More than 30 Feet long, this giant marine reptile prowled the prehistoric seas during the reign of dinosaurs, launching its head with the help of four powerful flippers.

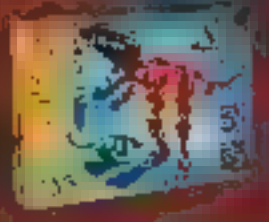


You can build your own Ironosaurus using parts from 4506 Deep Sea Predators and 4507 Prehistoric Creatures!

**WHAT WILL YOU MAKE?**



4506



4507



4508



# WHAT WILL YOU MAKE?



**1**

**2**

**3**

**1**

**2**

**4**

**1**

**2**

**3**

**4**

**5**

2x

2x

2x

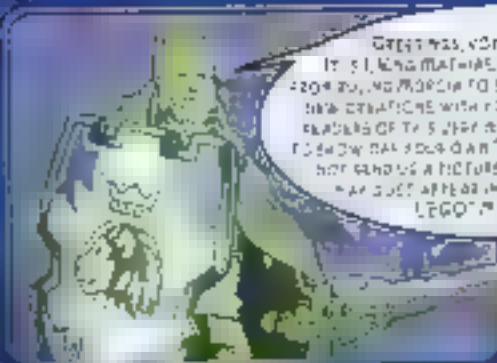
2x

LEGO® Technic  
 sets are now  
 available in  
 16 different  
 colors and  
 shapes. Plus  
 45 more cool  
 building ideas!





# cool creations



GREETINGS, COOL CREATOR!  
IT'S TIME TO SHARE THE GREAT IDEAS  
FROM YOU, NO WORRY TO SHARE YOUR  
NEW CREATIONS WITH YOU, SEND IN BY FELLOW  
READERS OF THE 5 YEAR MAGAZINE!! YOU'D LIKE  
TO SHOW THAT YOU CAN "COOL CREATIONS" WHY  
NOT SEND US A PHOTO YOUR MASTERPIECE  
MAY JUST APPEAR IN AN ISSUE OF THE  
LEGO® MAGAZINE!

Send photos of your  
masterpiece to:



Cool Creations  
LEGO CLUB  
PO: Box 1306  
Enfield, CT 06083-1306

Remember to include your name,  
age, address and the name of your  
LEGO Club. Photos may be taken on Polaroids or computer  
printouts. Please! Pictures will not  
be returned, so take an extra photo  
for yourself!



LEGO®  
LEGO CLUB  
LEGO MAGAZINE

See more models from kids  
just like you on the Official Web  
Site of the LEGO Club!

club code

COOLCREATIONS

www.LEGOclub.com

LEGO

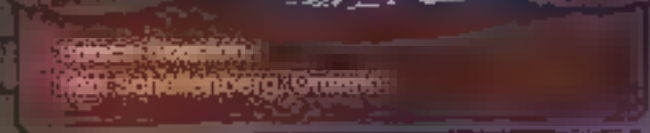
CONGRATULATIONS  
TO YOU FOR SHARING YOUR  
LEGO CLUB BUILD AND SHOW  
YOUR MASTERS!

ALSO

ALSO

ALSO

ALSO



LEGO CLUB MEMBER  
ALEX SCHWENBERG (10 years)



LEGO CLUB MEMBER  
ALEXIS BARNETT (10 years)



LEGO CLUB MEMBER  
ALEXANDER CAMPBELL (8 years)





**Rohkshi Rover**  
Ian Charles, 8, Texas



**United States**  
Ross Treadway, 12, Maine



**Clickling L... and Blockum & Brickly C...**  
Adam and Danielle Vera, 11 & 9, Texas



**EIFFel Tower**; Ben Ostland, 8, California



**BIONICLE™ Halloween Costume**  
Colin Griffin, 6, Illinois



**Tire Factory**  
Josiah Janecek, 12, Iowa



**Amazing Redini**  
Lucas, 11, Indianapolis





# LEGO Newsflash

BUILDING A BETTER TOMORROW ONE BRICK AT A TIME

Volume MMIV Number 4



## BIONICLE™ Blasts Off at Comic-Con



Every year, thousands of people from all over the world gather at the San Diego Convention Center to attend Comic-Con International, the biggest comic and pop culture show in the US! Now the Toa Metru are leaving the City of Legends and heading there as well, as BIONICLE comes to Comic-Con on July 22-25.

guests such as comic writer Greg Farshtey, comic designer Toby Dulkiewicz and BIONICLE.com producer Leah Weston. Also on tap, a sneak peek at scenes from the upcoming movie BIONICLE 2: Legends of Metru Nui! For more information, check out [www.BIONICLE.com](http://www.BIONICLE.com) or [www.comic-con.org](http://www.comic-con.org).

BIONICLE fans at this year's Comic-Con will have the chance to meet special



## LEGO® Star Wars™ Vader Invades San Diego!

LEGO Star Wars™ fans at Comic-Con will be in for a surprise of galactic proportions – when they suddenly find themselves, face-to-face, with a life-size LEGO brick model of Darth Vader! A full scale R2-D2 will be on display as well, along with detailed LEGO dioramas highlighting scenes from the various Star Wars™ movies.

Con will also receive free mini-TIE fighters (supplies are limited), and get a first look at the newly modified LEGO Millennium Falcon™. This LEGO model, featuring tons of authentic details and a new mini-figure crew, won't be appearing in stores until next August – but LEGO Star Wars™ fans will have a chance to win one of six advance models to be given away during Comic-Con.

Visitors to the Lucas-sponsored Star Wars™ booth at Comic-

## New at LEGO.com!

### WORLDBUILDERS WANTED!

So you've managed to spend your time with your imagination, and you've mastered the mighty Technic™ you're a class Act World Builder! Well... get ready for some amazing new adventures in the World Builder Expansion featuring the challenging new Deco and Premium™ models!

CLUB CODE: WORLD\_BUILDER  
[www.LEGOclub.com](http://www.LEGOclub.com)

### FREE BRICKS!

Ever wonder what it would be like to have a virtually unlimited collection of LEGO bricks right at your fingertips? With LEGO Digital Designer, you can now assemble and start building! It has everything you need to design and construct real LEGO creations right in your computer using virtual 3D elements. And right now you can download LEGO Digital Designer 1.3 for free!

CLUBCODE: DIGITALDESIGNER  
[www.LEGOclub.com](http://www.LEGOclub.com)

## Coming in August...

Look for specially marked Tropicana Pure Premium™ Healthy Kids™ orange juice to find out how you can receive a FREE LEGO® Dino set!

PLUS, just by entering you could WIN an Ultimate LEGO® prize package!



## SOLVE THE SHIELD!

\_\_\_\_\_

\_\_\_\_\_

\_\_\_\_\_

\_\_\_\_\_

DID YOU FIND ALL OF THE FRAGMENTS OF THE MAGICAL SHIELD OF UNSCRAMPLE THE LETTERS ON THE PIECES FOR A SECRET MESSAGE FROM THE KNIGHTS!




LETTER SCRAMBLE SOLUTION:  
3070 242 07070







A dramatic scene from a LEGO set featuring a large, grey and blue Titan Xp mech in the center, surrounded by various dinosaurs including a large red and black dinosaur on the left, a blue and orange dinosaur on the right, and several smaller dinosaurs at the bottom. The background is a dark, reddish-brown landscape with a cityscape on the left. The text 'CAN TITAN XP SURVIVE THE JURASSIC JAWS OF TERROR?' is written in yellow in the upper left.

CAN TITAN XP  
SURVIVE THE  
JURASSIC JAWS  
OF TERROR?

# THE TITAN vs. DINOSAURS

L

FOR LEGO LOVERS!

STARRING THE PREHISTORIC CREATURES  
AND TITAN XP DESIGNER SETS